

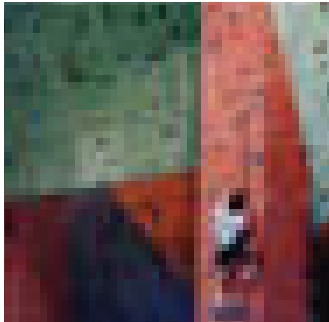


The Deutsche Evangelical Reform Church was where you could come and see the light; right through the holes in the roof. No longer needed by a congregation that had moved away, the grand façade was facing almost certain demolition. So one day when a rock climber called the owner with this idea of building a climbing center in the church, it sounded like a call from the heavens. Here was a guy who wanted a huge space, and another with a huge space in need of a tenant. Getting the Oregon District

neighborhood association neighbors to buy into this idea was another thing since zoning pretty much ruled out, makes it difficult to locate a retail business in the middle of a residential neighborhood. By chance, the president of the neighborhood association happened to be Barry Buckman, who helped make the logical argument that a climbing center may be the best hope for a revival at the corner of Clay and Cass and a way to save the church. The Urban Krag is now a destination

## urban krag

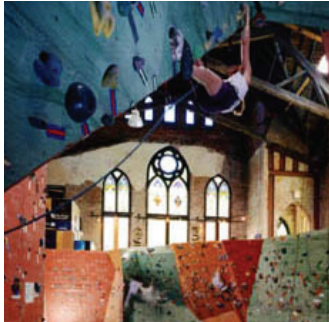
location for climbers from a three state area. No longer an eyesore, this project was the springboard for two other church conversions in the neighborhood. RBA reformed the church, and the neighbors now see a light on inside, as the climbers reach for the heavens.



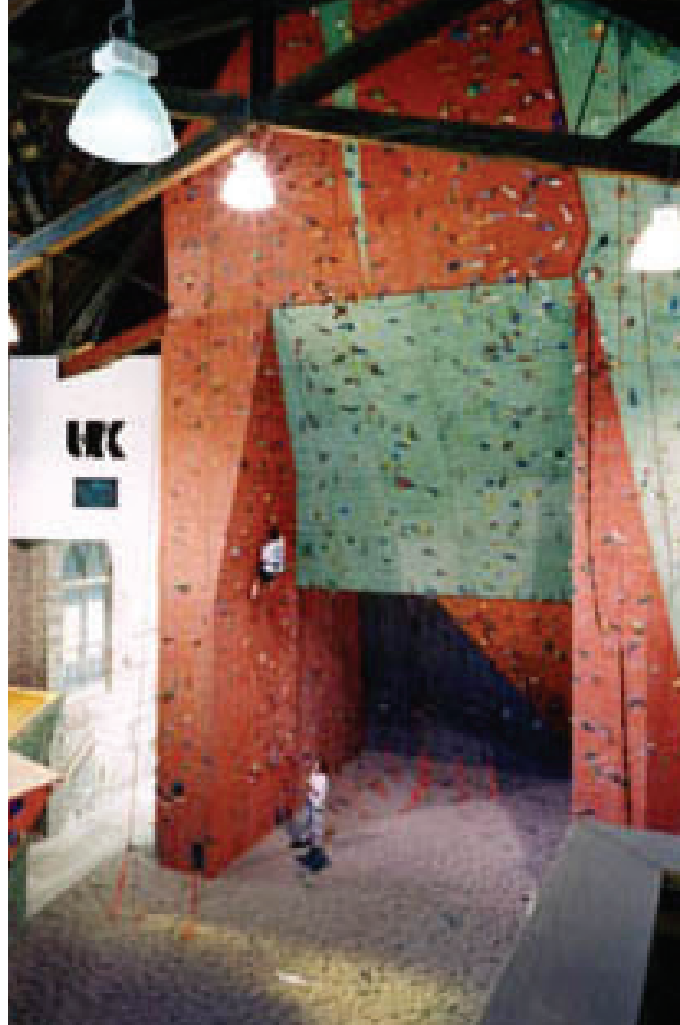
[Approaching The Summit]



[Abandoned Glory]



[Gripping The Edge]



[Climbing Center]

### location:

Oregon Historic District  
Dayton, OH

### project:

Adaptive reuse of an abandoned romanesque church as an indoor rock climbing gym.

### scope:

Architectural design, landmark design review consultation.

### size:

5,000 sq. ft. renovation

### construction cost:

\$500,000

### client:

Karl Williamson

### consultants:

Shell & Meyer Associates  
(structural engineering)

### awards:

Preservation Dayton, Inc.  
Merit Award